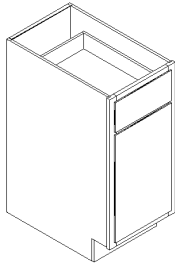


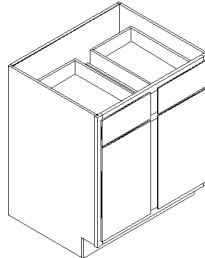
Ideal cabinet

BASE CABINETS



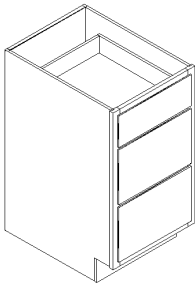
1-Door Base Cabinets

B12 B24
B15
B18
B21



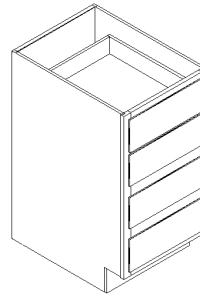
2-Door Base Cabinets

B27
B30
B33
B36



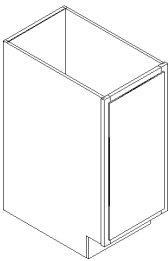
3-Drawer Base Cabinets

DB12-3
DB15-3
DB18-3
DB21-3
DB24-3



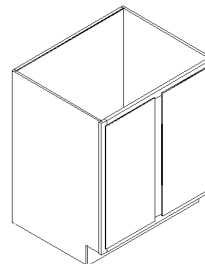
4-Drawer Base Cabinets

DB15
DB18
DB21
DB24



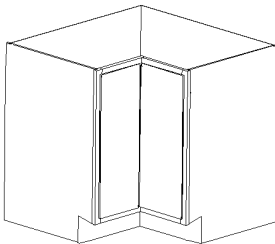
Full Height Door: 1-Door
Base Cabinets

B09^{FHD} B21^{FHD}
B12^{FHD} B24^{FHD}
B15^{FHD}
B18^{FHD}



Full Height Door: 2-Door
Base Cabinets

B27^{FHD}
B30^{FHD}
B33^{FHD}
B36^{FHD}



Lazy Susan Cabinets

LS36**

-All base cabinets are 24”D and 34 ½”H (with the exception of corner cabinets).

-Butt doors (with no center mullion in cabinet frame) also available.

**Lazy Susans take up a standard 36” of wall space, are 18”D along sides and have 24” polymer trays. “Super” Lazy Susans also available at 21”D along sides with 28” trays.